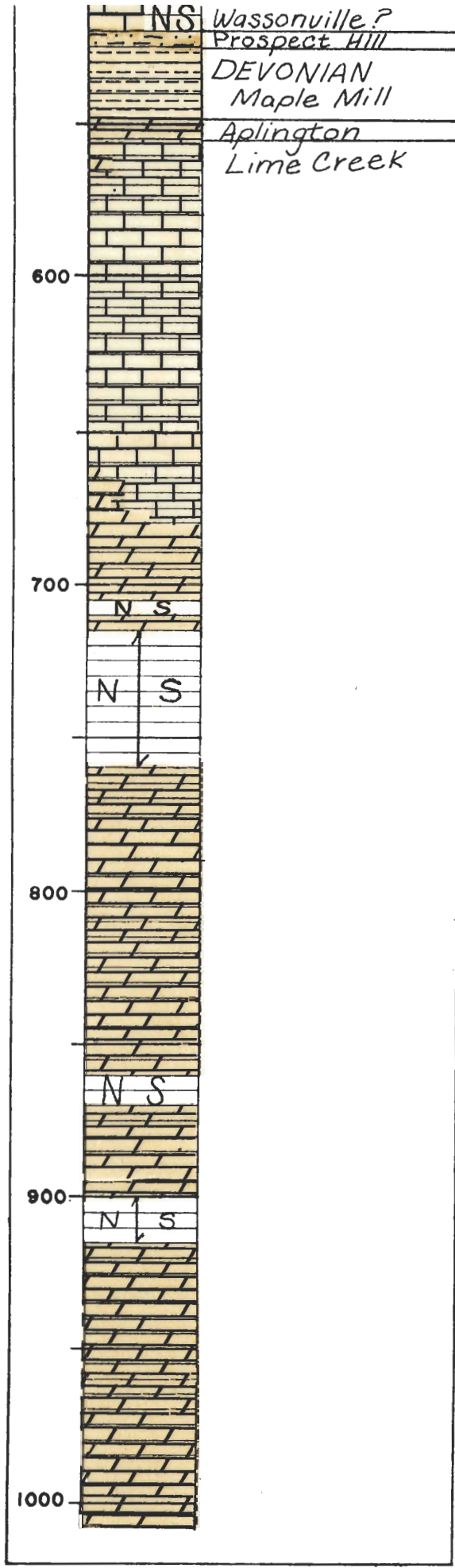
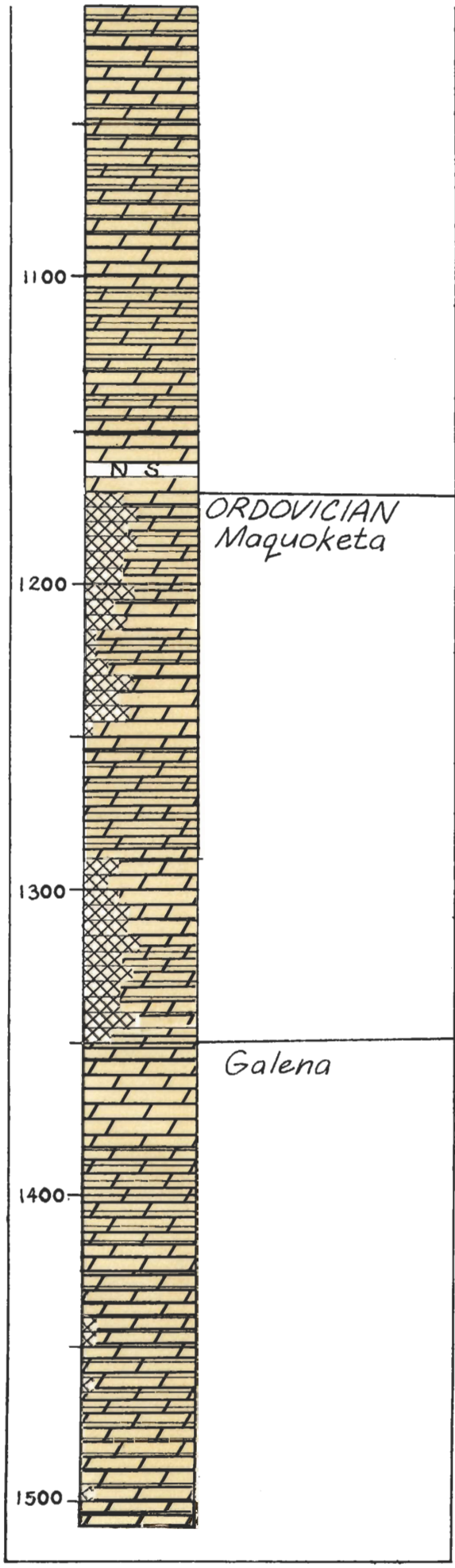
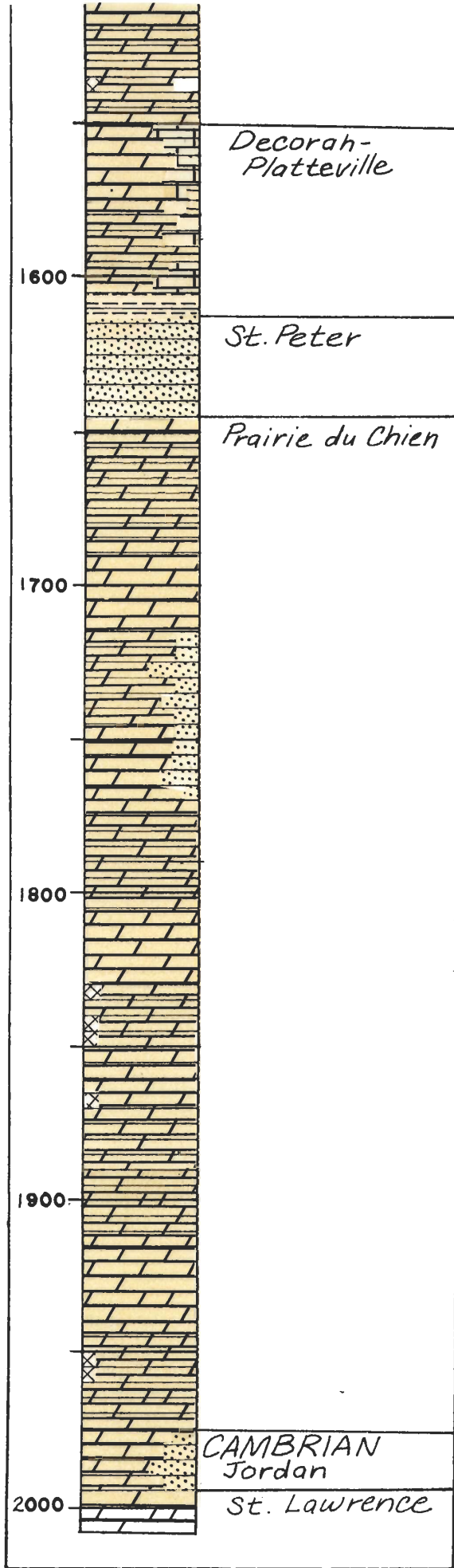


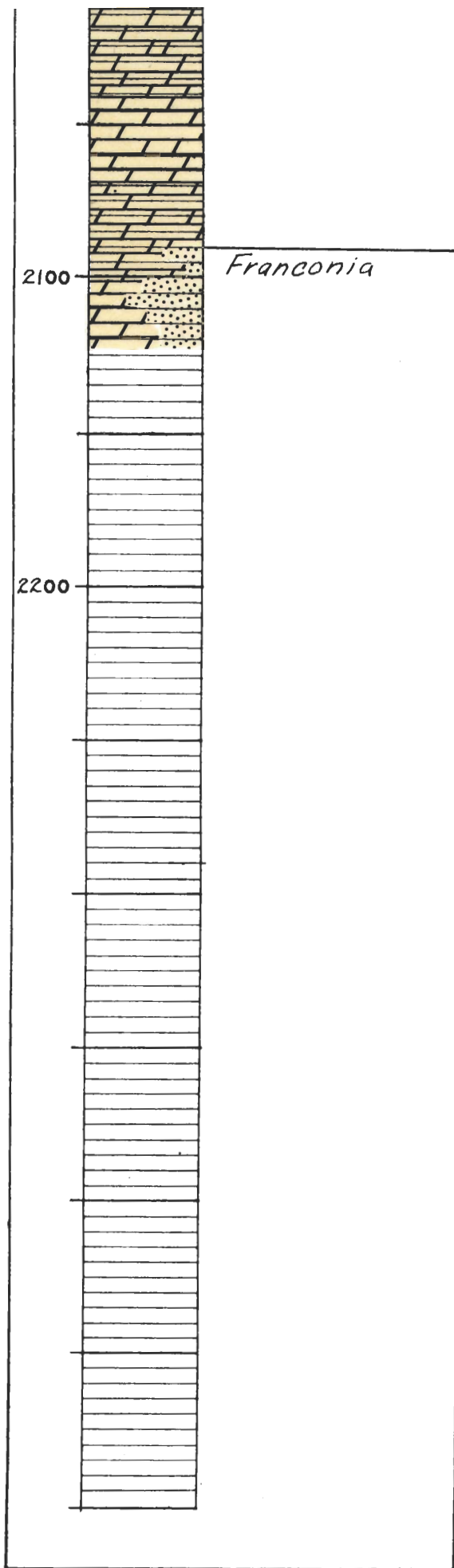
IOWA GEOLOGICAL SURVEY in Cooperation with U.S. GEOLOGICAL SURVEY Iowa City, Iowa		
Name	Oscar Mayer Packing Co.	State Iowa
Town	Perry	County Dallas
Contractor	Ed Winslow	Driller
Drilling Dates	July 9 - Oct. 10, 1969	Sec. 8
Casing Record	21' of 30" CSg. 180' of 26" CSg. 1713' of 13 3/8" CSg.	T. N., R. 81 28W
S.W.L. Before	49' Acid	G.P.M. D.D. 1000 198'
After 4510 gal. of HCL	55' (S.W.L.)	2400 (G.P.M.) / 108' (D.D.)
Remarks	Main water - Prairie du Chien	Elev. 935.26'
Logged by	D. Northrup	T.D. 2122'
	Sept. 1969	I.G.S. No. W-21729

- Explanation of Colors
- Soil
 - Loose, Silty or Siltstone
 - Drift
 - Sand & Gravel
 - Shale
 - Sandstone
 - Limestone
 - Dolomite
 - Chert
 - Gypsum or Anhydrite
 - Coal
 - Clay
 - N/S No Samples









Performance of Perry Well #7.

Date	Static Water Level		Specific Capacity GPM/Ft. of Drawdown	Pumping Rate Gallons/Min.
	Ft. Below Base Plate	Ft. Elevation (MSL)		
6-9-70	55	883.3		
6-13-73	120	818.3	26.4	1165 (indicated)
7-__-75	130.9	807.4	33	--
6-7-77	156.5	781.8	49	1100 "
7-11-77	153	785.3	--	--
11-16-79	121	817.3	29.4	1000 "
3-17-80	141.5	796.8	29.1	1150 "
5-19-80	152.8	785.5	24.9	1050 "
5-8-81	158	780.3	29	1050 "
6-3-81	159	779.3	26.9	1050 "
6-15-81	159	779.3	25.6	1000 (TOTALIZER)
6-24-81	160	778.3	25.3	986.7 (TOTALIZER)
7-1-81	161	777.3	25.9	983.3 (TOTALIZER)
7-10-81	160	778.3	26.1	1146.7 (TOTALIZER)
7-22-81	159	779.3	24.5	1153.3 (TOTALIZER)
8-4-81	158	780.3	25.0	1176.7 (TOTALIZER)
9-8-81	153	785.3	25.4	1166.6 (TOTALIZER)
10-5-81	148	790.3	27.7	1205.5 (TOTALIZER)
11-10-81	147	793.3	31.3	1246.6 (TOTALIZER)
12-21-81	142	796.6	35.4	1310.0 (TOTALIZER)
2-16-82	145	793.3	26.2	1233.3 (TOTALIZER)
3-31-82	152	786.3	23.9	1173.3 (TOTALIZER)
4-13-82	160	778.3	25.1	1130 (TOTALIZER)
7-7-82	164	774.3	25.5	1120 (TOTALIZER)
8-5-82	162	776.3	24.5	1127 (TOTALIZER)
9-9-82	155	783.3	24.8	1167 (TOTALIZER)
10-12-82	145	793.3	24.2	1211.7 (TOTALIZER)
11-16-82	140	798.3	30.9	1300 (TOTALIZER)
1-7-83	135	803.3	28.9	1291.7 (TOTALIZER)
2-2-83	145	793.3	25.2	1143 (TOTALIZER)
5-12-83	161	777.3	27.0	1136 (TOTALIZER)
6-20-83	162	776.3	26.4	1117 (TOTALIZER)
7-13-83	164	774.3	26.6	1123 (TOTALIZER)
8-4-83	164	774.3	27.0	

WATER WELL DEVELOPMENT
OSCAR MAYER & CO.
 LOCATION: PERRY IOWA PLANT
 ALTERNATE WELL
 ROTARY DRILLING METHOD
 1969

HOWARD R. GREEN, CO.
Consulting Engineers
 CEDAR RAPIDS, IOWA

GEOLOGICAL FORECAST						CONSTRUCTION LOG							
SYSTEM	FORMATION	DESCRIPTION	THICKNESS FEET	FROM FEET	TO FEET	ASSUMED M.S.L. ELEV. = 950.0							
						TOTAL DEPTH- FEET	LENGTH SECTION- FEET	DIAMETER OF BORE- INCHES	CASING O.D. INCHES	CASING I.D. INCHES	TYPE CASING	WALL THICKNESS	
QUATERNARY	PLEISTOCENE	GLACIAL DRIFT	120	0	120			26" BORE					
	ST. LOUIS	SANDY LS. / DOLOMITE	15	120	135	135	135	24" O.D. LINER				0.375	
MISSISSIPPIAN	WARSAW KEOKUK BURLINGTON	DOLOMITE	135	135	270			23" BORE			BUILT UP SHOE		
	GILMORE CITY	LIMESTONE	35	270	305			20" O.D. LINER					
	HAMPTON	SOME LS. UPPER PART DOLOMITE CONSID. CHERT LOWER PART	100	305	405								
	NORTH HILL PROSPECT HILL	LIMESTONE SILTSTONE	10	405	415								
	MAPLE MILL	SHALE	65	425	490		500				5T.	0.375	
DEVONIAN	LIME CREEK	LIMESTONE THIN SHALE ZONES	150	490	640								
	CEDAR VALLEY	DOLOMITE CON. GYPSUM-ANHYDRITE IN LOWER PART MINOR SHALE BEDS	400	640	1040						T&G CASING - OPTIONAL		
	WAPSIPINICON	DOLOMITE CON. GYPSUM-ANHYDRITE MINOR SHALE	110	1040	1150						BAKER CENTRALIZERS @ 100' MAX. SPACING		
SILURIAN	NIAGARAN	DOLOMITE	70	1150	1220								
ORDOVICIAN	MAQUOKETA	THIN SHALE AT TOP DOLOMITE	265	1220	1485			15" BORE					
	GALENA	DOLOMITE / LIMESTONE	180	1485	1665								
	DECORAH PLATTEVILLE	LS. / DOLOMITE	65	1665	1730								
	ST. PETER	SANDSTONE	40	1730	1770								
	PRAIRIE DU CHIEN	DOLOMITE ROOT VALLEY SANDSTONE 30" THICK AT 1190 ±	390	1770	2160		1880		13 3/4" O.D. CASING				
	JORDON	SANDSTONE	30	2160	2190								
CAMBRIAN	ST. LAWRENCE	DOLOMITE	110	2190	2300			12 1/4" BORE					
						2290	2290				CEMENTING OR EQUAL	12.25" TOTAL DEPTH	

PIPE SPEC. - A.P.I.-5L, GRADE "B"

SCALE:
 HORIZ. 1" = 1'-0"
 VERT. 1" = 200"

WATER WELL DEVELOPMENT
OSCAR MAYER & CO.
 LOCATION: PERRY IOWA PLANT
 BASIC WELL
 CABLE TOOL DRILLING METHOD
 1969

HOWARD R. GREEN, CO.
Consulting Engineers
 CEDAR RAPIDS, IOWA

GEOLOGICAL FORECAST						CONSTRUCTION LOG										
SYSTEM	FORMATION	DESCRIPTION	THICKNESS FEET	FROM FEET	TO FEET	ASSUMED M.S.L. ELEV. = 950.0		TOTAL DEPTH- FEET	LENGTH SECTION- FEET	DIAMETER OF BORE- INCHES	CASING O.D. INCHES	CASING I.D. INCHES	TYPE CASING	WALL THICKNESS		
QUATERNARY	PLEISTOCENE	GLACIAL DRIFT	120	0	120			130	130	26	24	23.25	ST.	0.375		
	ST. LOUIS	SANDY LS. & DOLOMITE	18	120	135											
MISSISSIPPIAN	WARSAW KEOKUK BURLINGTON	DOLOMITE	135	135	270											
	GILMORE CITY	LIMESTONE	35	270	305											
	HAMPTON	DOLOMITE SOME LS UPPER PART CONSID. CHERT LOWER PART	100	305	405											
	NORTH HILL PROSPECT HILL	LIMESTONE SILTSTONE	18	405	423											
	MAPLE MILL	SHALE	65	425	490					500	370	23	22	21.25	ST.	0.375
DEVONIAN	LIME CREEK	LIMESTONE THIN SHALE ZONES	150	490	640											
	CEDAR VALLEY	DOLOMITE CON. GYPSUM-ANHYDRITE IN LOWER PART MINOR SHALE BEDS	400	640	1040											
	WAPSIPINICON	DOLOMITE CON. GYPSUM-ANHYDRITE MINOR SHALE	110	1040	1150											
SILURIAN	NIAGARAN	DOLOMITE	70	1150	1220											
	MAQUOKETA	DOLOMITE THIN SHALE AT TOP	265	1220	1485					1220						
ORDOVICIAN	GALENA	DOLOMITE & LIMESTONE	180	1485	1665											
	DECORAH PLATTEVILLE	LS. & DOLOMITE	65	1665	1730											
	ST. PETER	SANDSTONE	40	1730	1770											
	PRAIRIE DU CHIEN	DOLOMITE ROOT VALLEY SANDSTONE 30'± THICK AT 1900 ±	390	1770	2160					1495	275	20	18	17.25	ST.	0.375
	JORDAN	SANDSTONE	30	2160	2190											
CAMBRIAN	ST. LAWRENCE	DOLOMITE	110	2190	2300											
								1880	1880	17	13.375	12.625	ST.	0.375		
								2290		12.25			TOTAL DEPTH			

PIPE SPEC. - A.P.I. - 5L, GRADE "B"

SCALE:
 HORIZ. 1" = 1'-0"
 VERT. 1" = 200'

November 4, 1969

Mr. Donald A. Wallgren, Project Engineer
Oscar Mayer Packing Company
910 Mayer Ave.
Madison, Wisconsin 53701

Dear Don:

We are enclosing a copy of the geologic log for the Oscar Mayer well at Perry. Please advise if you have any unanswered questions.

It is very gratifying to know that the acid job was so successful, and am sure that it will pay for itself many times over in lower pumping costs.

Thank you again for sending us the results of the second pumping test and for the phone call. It was a pleasure to have worked with you on the Perry well and hope to see you again before too long.

Very truly yours,

Richard C. Northup
Chief of Subsurface Geology

RCN:cs
Enclosure

W-21729

OSCAR Major PACIFIC Co., PERRY, ISWA

DATE 10/9-10, 1969

SWL 55'

PL 84.9' @ 1016 GPM

PL 151.9'

PUMPING TEST OCT. 9-10, 1969 - AFTER ACIDIZING WITH 4500 GAL HCL

SWL 55'

PL = 84.9' @ 1016 GPM.

PL = 151.9' @ 2000 GPM

163' @ 2400 GPM.

Oscar Mayer, Perry 8-81-286

Jordan well 2122'

Drilled July-Oct 1969

Elev. Is 935.26' a.s.l.

MP 4.08' above ground (939.34')

SWL 53.00' below MP drilled
48.92' below ground 9/30/69 IGS
(Before acidizing)

SWL 55' below MP 10/10/69 Drilled
(After acidizing)

935.26

48.92

886.34

935.26

51.00 ?

884.26

Paul :

Attn. George Stearns
Oscar Mayer Foods Corp.
P. O. Box 7188
Madison, WISC. 53707

wants info on ~~the~~ change in non-
pumping water level for Jordan
aquifer at Perry, Ia (they have a
plant there) over the last 10-15 yrs.

You could include a copy of Jordan
Atlas and any comments you
can make.

D

K Done
DJK

8/12/83

To: Mr Paul J. Herick

From: G. A. Stearns

Subj: Oscar Mayer Perry Well #7

This is a copy of my worksheet
on subj well. You may find
some of the data to be of interest

Thanks a lot for the Jordan
Aquifer report which you prepared.
What a magnificent job!

Please excuse pencil marks but
our reply is on vac. Friday.

G. A. Stearns