

W57087

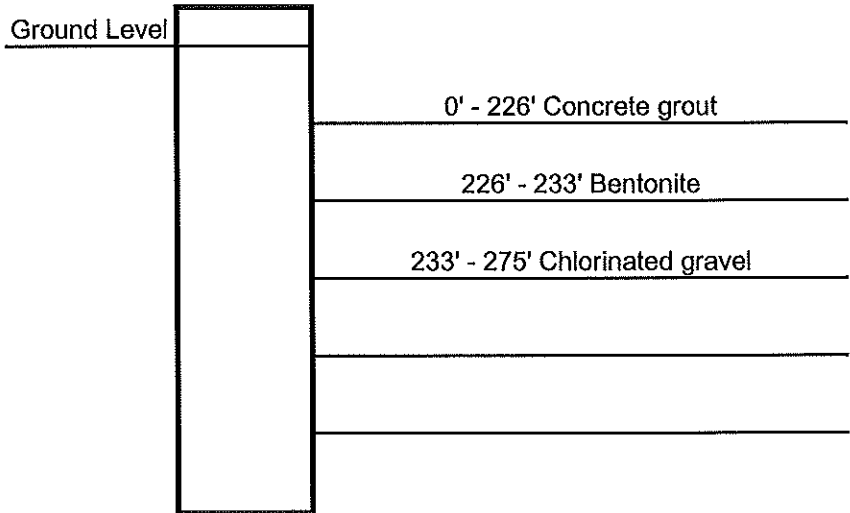
**Sargent Drilling**  
 INDUSTRIAL ENGINEERING  
 COMPLETE MUNICIPAL AND INDUSTRIAL  
 WELL AND PUMP SERVICE

PO Box 367  
 846 South 13<sup>th</sup> St.  
 Geneva, NE 68361-0367

Phone: (402) 759-3902  
 Toll Free: (888) 496-3902  
 Fax: (402) 759-4960

**Driller's Log**

<b>Customer:</b> Hospers RWD #1		<b>Legal:</b> Well #11	
<b>Date Construction Started:</b> 3/4/2008		<b>GPS Reading:</b> 43° 02' 43.2"	
<b>Well Depth:</b> 275'		<b>Bore Hole:</b> 24"	
<b>Type of Plain Casing:</b> .375" wall steel		<b>Casing Dia.:</b> 12"	
<b>From:</b> 0'		<b>To:</b> 260'	
<b>Type of Perf. Casing:</b> Stainless V-wire		<b>Casing Dia.:</b> 12"	
<b>Slot size:</b> .050"		<b>From:</b> 260'	
		<b>To:</b> 275'	
<b>Sump From:</b>		<b>Type of Bottom:</b> Stainless steel	
<b>Gravel From:</b>		<b>Grade Size:</b>	
<b>Yards of Gravel:</b> 3 super sacks		<b>Bags of Chunks:</b> 1 super sack	
<b>Bags of Powder:</b> 48		<b>Yards of Concrete:</b> 24 (grout)	
<b>Stabilizers:</b> 5		<b>Well Development Time:</b>	
<b>Test Pump Results:</b>		<b>SWL:</b>	
GPM from			
GPM from			
GPM from			
GPM from			



**Sargent Drilling**  
INDUSTRIAL ENGINEERING  
COMPLETE MUNICIPAL AND INDUSTRIAL  
WELL AND PUMP SERVICE

PO Box 367  
Geneva, NE 68361-0367

846 South 13<sup>th</sup> St.

Phone: (402) 759-3902  
1-888-496-3902

**TEST HOLE LOG**

CUSTOMER: Rural Water System #1	
WELL ID: 03-07	
LOCATION:	
LATITUDE: 43° 02' 43.4"	
LONGITUDE: 096° 11' 11.8"	
FOOTAGES:	
DATE: 11-8-07	DRILLED BY: CL

SWL: 237'  
PWL:

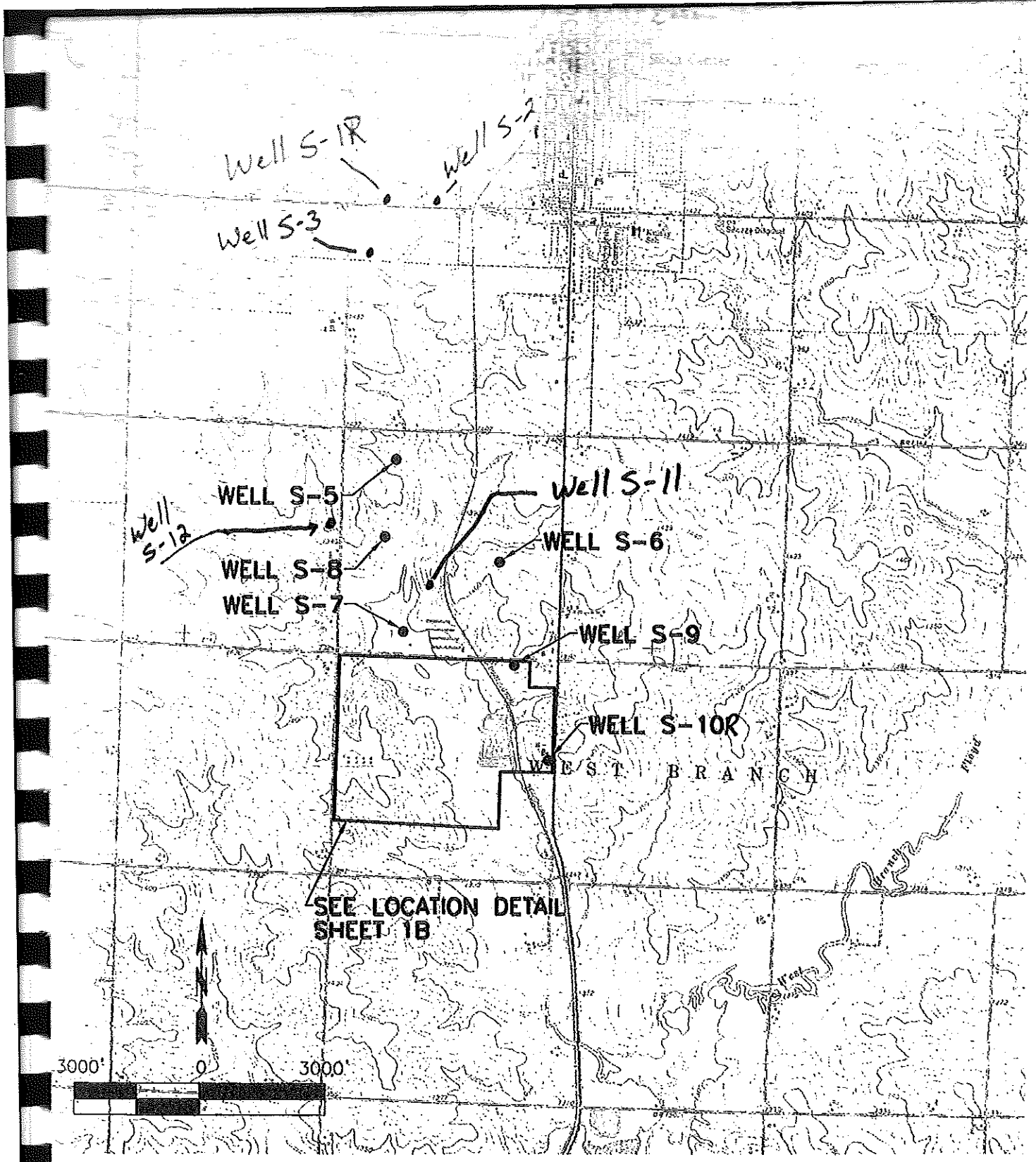
<u>from feet</u>	-	<u>to feet</u>	
0		20	Topsoil and clay
20		200	Clay
200		220	Sandy clay with sandstone streaks
220		240	Sandstone with clay streaks
240		275	Sandstone
275		276	Hard

Well Depth: 272'  
Bore Hole Dia: 7"

Plain casing: 232' of 2"  
Perf. casing: 40' of 2"

slot size: .020"

Gravel pack from 232' to 272'  
Bentonite from 0' to 232'



**LOCATION PLAN**

**1A**

P:\08\016\13\DWG\001.DWG



DeWid Grant Reckert and Associates Company  
 Consulting Engineers  
 Rock Rapids, Iowa  
 Sioux City, Iowa  
 Sioux Falls, South Dakota

Date SEPT 2007  
 Drawn By JMG  
 Approved GJP  
 Revised  
 PROJECT NO. 801613

**SCHEDULE 3 - WELLS  
 2008 IMPROVEMENTS  
 RURAL WATER SYSTEM NO. 1**