

W57088

Sargent Drilling

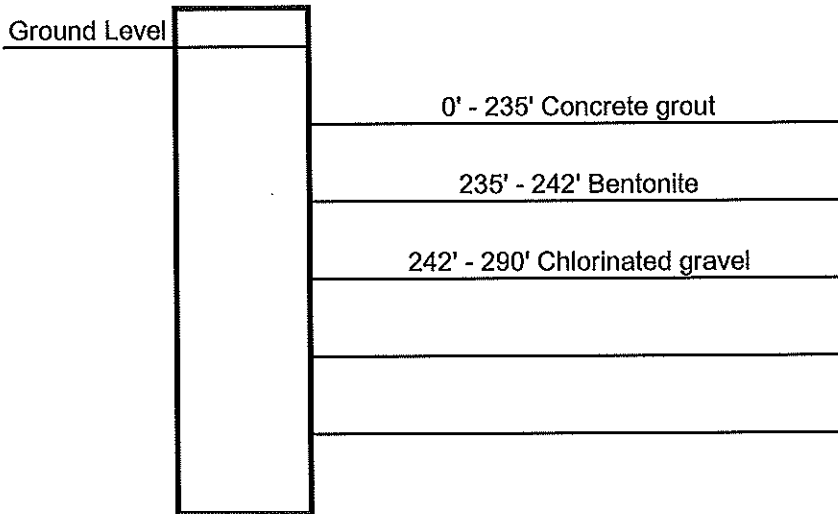
INDUSTRIAL ENGINEERING
COMPLETE MUNICIPAL AND INDUSTRIAL
WELL AND PUMP SERVICE

PO Box 367
846 South 13th St.
Geneva, NE 68361-0367

Phone: (402) 759-3902
Toll Free: (888) 496-3902
Fax: (402) 759-4960

Driller's Log

Customer: Hospers, IA		Legal: Well #12	
Date Construction Started: 2/20/2008		GPS Reading: 43° 03' 03.2"	
Well Depth: 282'		Bore Hole: 24'	
Type of Plain Casing: .375" wall steel		Casing Dia.: 12"	
From: 0' To: 264'			
Type of Perf. Casing: Stainless V-wire		Casing Dia.: 12"	
Slot size: .050" From: 264'		To: 282'	
Sump From:		Type of Bottom: Stainless steel	
Gravel From: American Materials		Grade Size: #50	
Yards of Gravel:	3 super sacks	Bags of Chunks:	1 super sack
Bags of Powder:	48	Yards of Concrete:	24
Stabilizers:	4	Well Development Time:	
Test Pump Results:		SWL:	
GPM from			
GPM from			
GPM from			
GPM from			



Sargent Drilling
 INDUSTRIAL ENGINEERING
 COMPLETE MUNICIPAL AND INDUSTRIAL
 WELL AND PUMP SERVICE

PO Box 367
 Geneva, NE 68361-0367

846 South 13th St.

Phone: (402) 759-3902
 1-888-496-3902

TEST HOLE LOG

CUSTOMER: Rural Water System #1, Hospers, IA	
WELL ID: 06-07	
LOCATION:	
LATITUDE: 43° 03' 03.5"	
LONGITUDE: 096° 11' 46.1"	
FOOTAGES:	
DATE: 11-15-07	DRILLED BY: CL

SWL: 261'
 PWL:

<u>from feet</u>	<u>- to feet</u>	
0	20	Clay and sand
20	80	Blue clay
80	100	Blue and gray clay with trace till
100	120	Clay
120	140	Clay and fine sand streaks
140	160	Clay and fine and medium sand streaks
160	180	Clay and cobbles
180	214	Clay and fine and medium sand layers
214	220	Fine and medium sand
220	290	Fine and medium sandstone
290	300	Clay

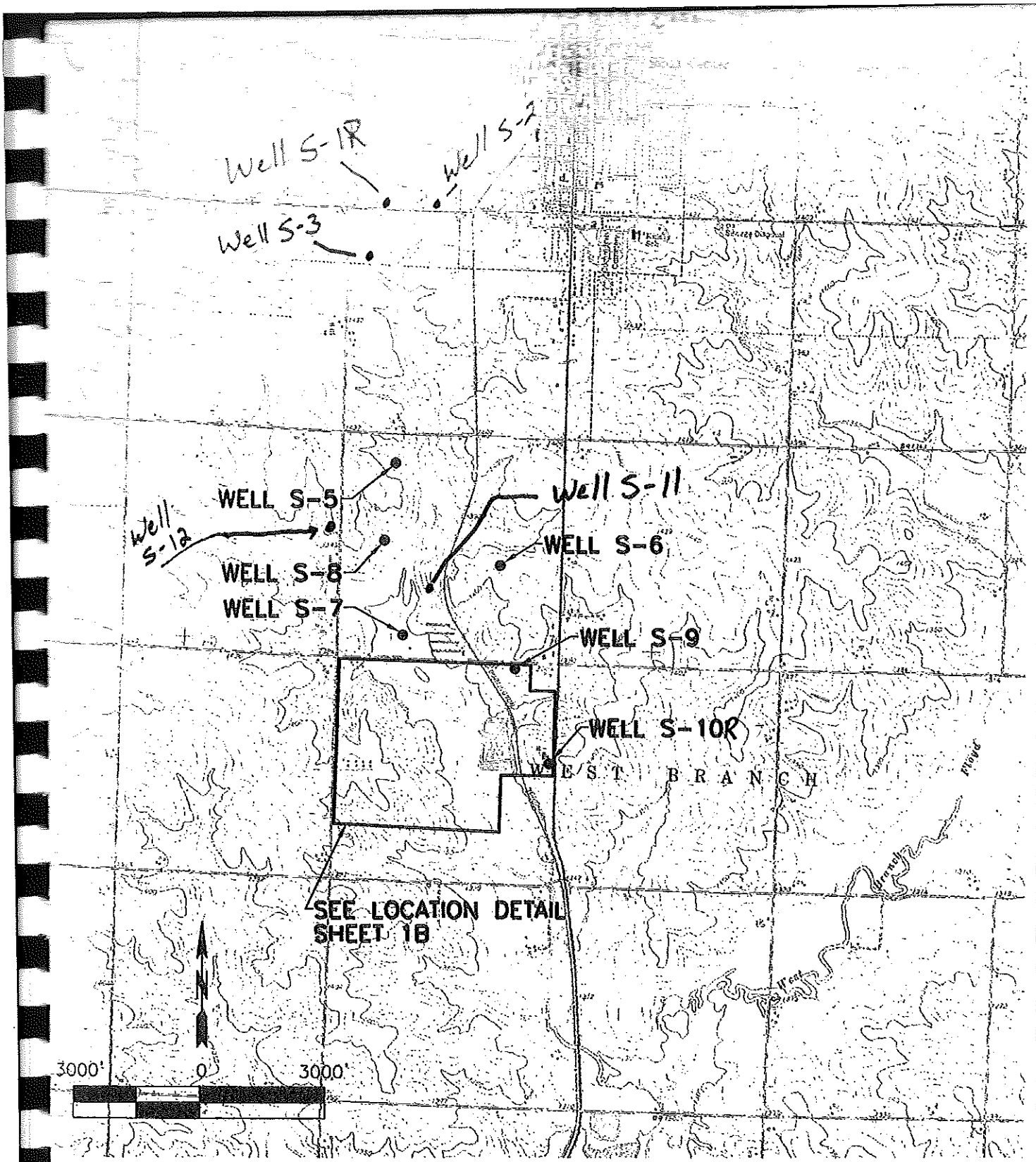
Well Depth: 290'
 Bore hole Dia: 7"

Plain casing: 230' of 2"
 Perf. casing: 60' of 2"

slot size: .020"

Gravel pack from 230' to 290'
 Bentonite from 0' to 230'

dh



LOCATION PLAN

1A

P:\08\016\13\DWG\001.DWG



Dellid Grant Reckert and Associates Company
 Consulting Engineers
 Rock Rapids, Iowa
 Sioux City, Iowa
 Sioux Falls, South Dakota

Date SEPT 2007
 Drawn By JMG
 Approved GJP
 Revised
 PROJECT NO. 801613

**SCHEDULE 3 - WELLS
 2008 IMPROVEMENTS
 RURAL WATER SYSTEM NO. 1**