

1. Contract..... Sioux Preme Packing Company ..... Date..... 1-27-71

2. City and State..... Sioux Center, Iowa ..... Driller..... Vic Soukap

3. Well No. 3 at test hole No. 70-1 Well location (attach map) 160' east of well #1

4. Work completed..... No of man hours as charged to job on time sheet.....

5. MATERIAL:	LENGTH	DIA.	GAUGE OR WALL THICKNESS	MATERIAL	TYPE	NO. OF OPENINGS
6. Screen	40'	12"	11	S. S.	shutter	cal.
7. Inner Casing	230'	12"	3/8"		black pipe	
8. Outer Casing						

9. ~~44 yds~~ <sup>tons</sup> of gravel used in the well. Size concrete mix - Fremont

10. Test of well. Did you use test or permanent pump? ..... Size of Bowl ..... Stages .....

11. Size of orifice..... inch by..... inch. Orifice tube reading..... inches.

12. Pumping test — measurements from ground level:

TIME	G.P.M.	STATIC	DRAWDOWN	PUMPING LEVEL
6 hrs	234	208	14	222
2 hrs	140		8	116

16.7  
 14 | 234  
 17  
 94  
 84  
 100

13. Recovery in 5 minutes..... full....., in 30 minutes.....

14. Did you seal bottom of well? yes. Thickness 1/4 inches, material S. S.

15. Well underreamed? ..... From..... feet to..... feet, ..... feet to..... feet.

16. If all screen was not placed at bottom, state how it was spaced.  
From..... feet to..... feet; from..... feet to..... feet; from..... feet to..... feet.

17. Depth of well from ground level to top of plug..... 268'..... Size of drilled hole..... 28"

18. Was cement placed around or between any of the casings? no

19. If so, state where, how much and method used. ....

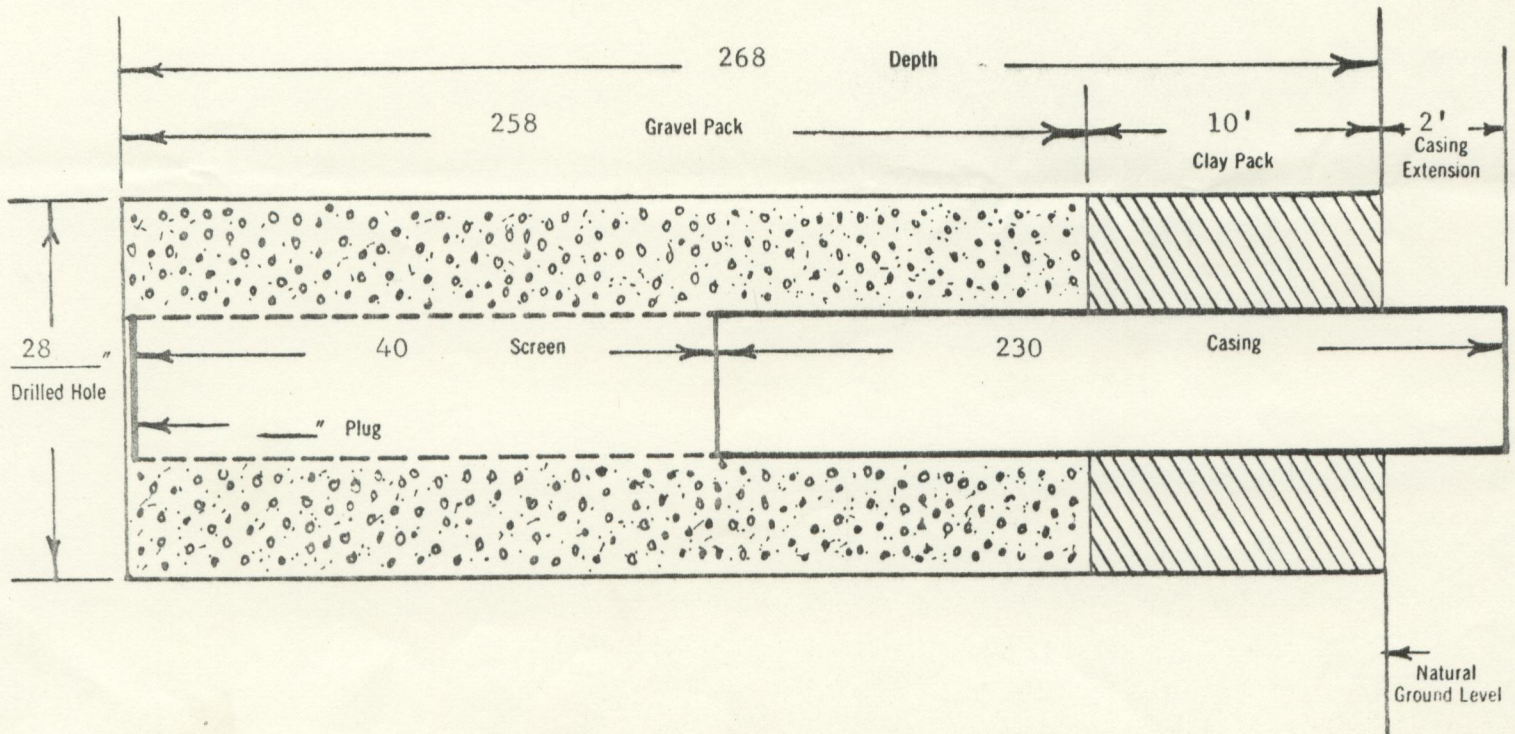
Cuttings not received?  
" could be in warehouse, but uncut DLX Mar. 1975

CONTRACT Sioux Preme Packing Company Well No. 2

Log of well from ground level:

Feet	Feet	Formation
0	to 40	Brown Clay
40	to 75	Blue Clay Gravel & Boulders
75	to 213	Blue Clay & Boulders
213	to 230	Fine Sand and coarse sand
230	to 237	Blue Clay
237	to 247	Coarse Sand
247	to 250	Gray Shale
250	to 268	Sandstone - fine
	to	
	to	
	to	
	to	
	to	
	to	
	to	
	to	
	to	
	to	
	to	

*This log matches Testhole 70-1*



W-5794

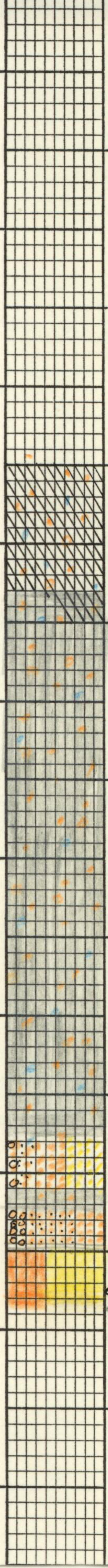
Sioux Center  
Sioux Preme Packing Co.

Test hole 70-1 = well No. 2

Driller's log  
Elect. Log in file  
Loc: SE SE NE 20-95-45

Elev.

0  
50  
100  
150  
200  
250



← TD. 268

CUSTOMER Layne Western Co.

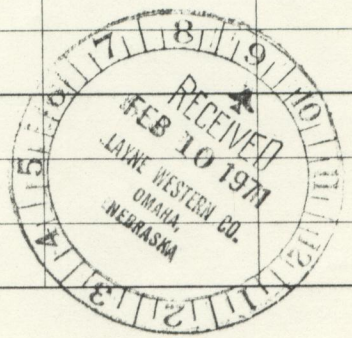
DATE 2-7-71

*Reilly*

ADDRESS Omaha, Nebraska

Sioux Preme Packing Company Sioux Center, Iowa Deep Well #2

SAMPLE NUMBER		71029			
DATE COLLECTED		1-26-71			
DATE RECEIVED		2-4-71			
SAMPLING POINT		Well #3			
by: Vic Soukup					
CALCIUM	PPM AS	290			
	CACO3				
MAGNESIUM	PPM AS	126			
	CACO3				
SODIUM	PPM AS	110			
	CACO3				
ALKALINITY (M)	PPM AS	324			
	CACO3				
ALKALINITY (P)	PPM AS	0			
	CACO3				
SULFATE	PPM AS	194			
	CACO3				
CHLORIDE	PPM AS	8			
	CACO3				
TOTAL HARDNESS	PPM AS	416			
	CACO3				
NON CARBONATE HARD	PPM AS	92			
	CACO3				
FREE CARBON DIOXIDE	PPM AS	60			
	CO2				
IRON	PPM AS	0.81			
	FE				
MANGANESE	PPM AS	0.4			
	MN				
SILICA	PPM AS	---			
	SiO2				
pH		7.0			
TURBIDITY JT <sup>U</sup>		XXXX XX	6.1		
COLOR		AWWA	---		



REMARKS:

Dennis DeBoer *NKS*  
CHEMIST

SPONTANEOUS-POTENTIAL  
(MILLIVOLTS)

RESISTIVITY  
(OHMS)

