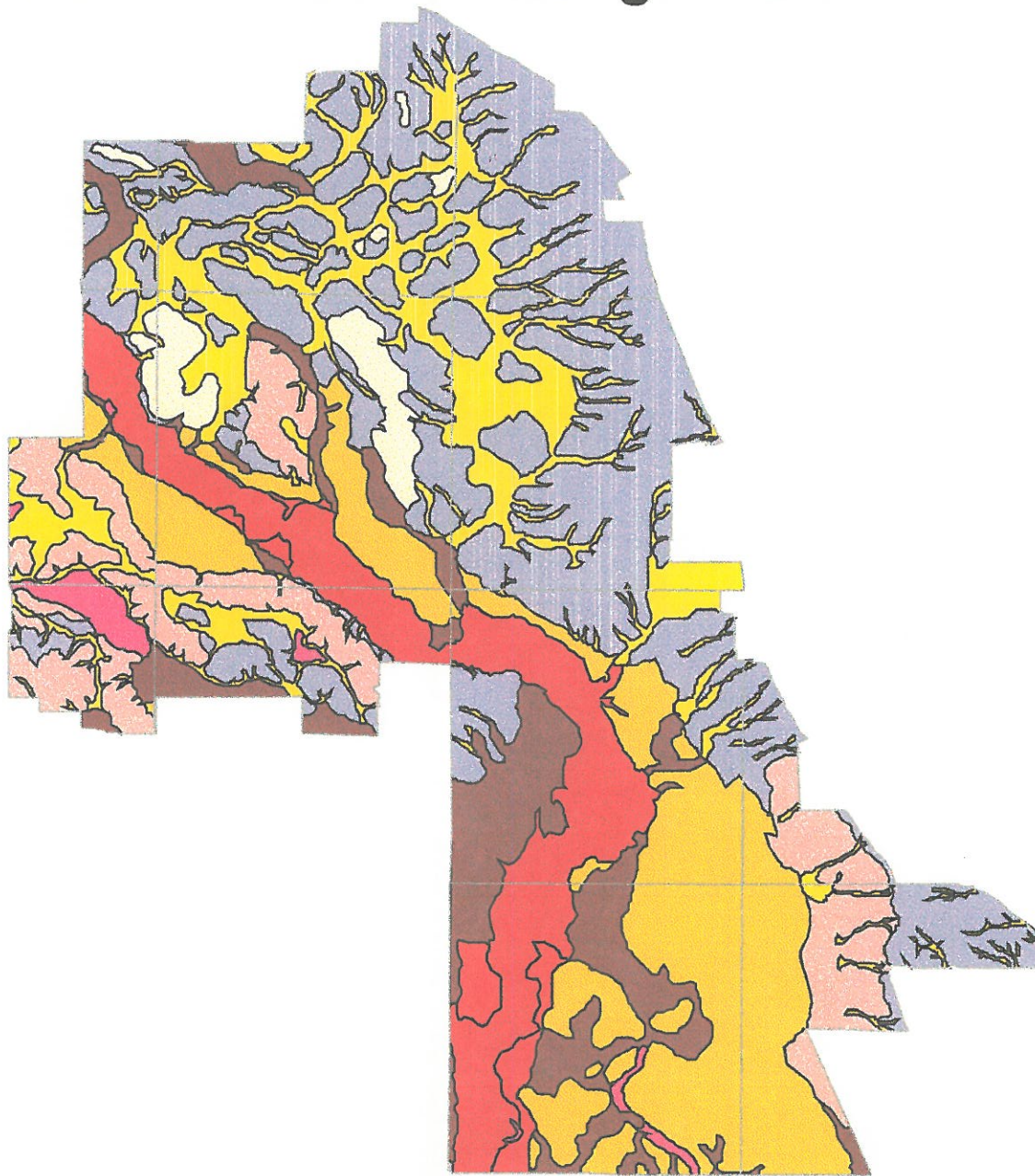
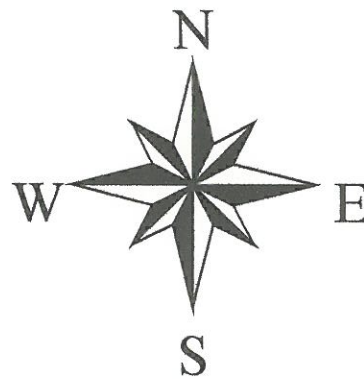


# Potential for Buried Archaeological Sites at Camp Dodge



- section line
- Map Units**
- low
- low-moderate (wind)
- low-moderate (wind)
- moderate (wind)
- low-moderate
- moderate-high
- moderate-high (young)
- high
- moderate



**Legend**  
**Description of Mapping Units**

<u>Map Unit</u>	<u>Potential</u>
Low local	low potential, local landscape positions of limited extent may contain prehistoric cultural resources that have been buried by slopewash
Low local - wind	low potential, local landscape positions of limited extent may contain prehistoric cultural resources that have been buried by wind-transported sand
Low-moderate wind	low to moderate potential, local landscape positions may contain prehistoric cultural resources that have been buried by wind-transported sand and slopewash
Moderate	moderate potential, wetland areas poorly drained but old enough to contain buried prehistoric cultural resources. This mapping unit may contain environmental records (pollen, plant macrofossils, diatoms, etc) that may be valuable in reconstructing prehistoric and historic environments
Moderate to high - wind	moderate to high potential, may contain prehistoric cultural resources that have been buried by wind-deposited sediments and slopewash. Depth of burial should not exceed 1.5 meters.
Moderate to high	moderate to high potential, may contain prehistoric cultural resources that have been buried by alluvium or slopewash. Depth of burial should not exceed 1.0 meters
Moderate to high -- young	moderate to high potential, may contain cultural resources less than 1000 years old buried by alluvium. Some of this mapping unit consists of post-settlement alluvium that is too young to contain in-situ prehistoric cultural resources. Post-settlement alluvium buries all prehistoric surfaces to variable depths in this mapping unit. Maximum depth of burial of in-situ cultural resources is estimated to be between 1.5 and 2.0 meters in this mapping unit.
High	High potential, may contain cultural resources buried by alluvium. Unit is underlain by alluvium ranging from about 8500 to 500 years in age. Thin post-settlement may mantle the prehistoric surface in this mapping unit. Maximum depth of burial of in-situ cultural resources is estimated to be between 1.5 and 2.0 meters in this mapping unit.

\* Potential is based on age and depositional environment of the sediments comprising the mapping unit and assumes all surfaces have been cultivated. Cultural preferences and settlement patterns are not considered in this assessment.